



VALUE PROPOSITION





WOOD SIDING THAT LASTS A LIFETIME

The Choice You've Always Wanted

Timberthane Siding delivers the warmth, beauty, charm, and the value-enhancing properties of real solid wood siding without the upkeep. Other wood siding products may claim similar results, but only Timberthane Siding can deliver on its promise. Glance through this brochure at some projects and visualize what it feels like to come home to Timberthane Wood Siding.



WHAT IS TIMBERTHANE?

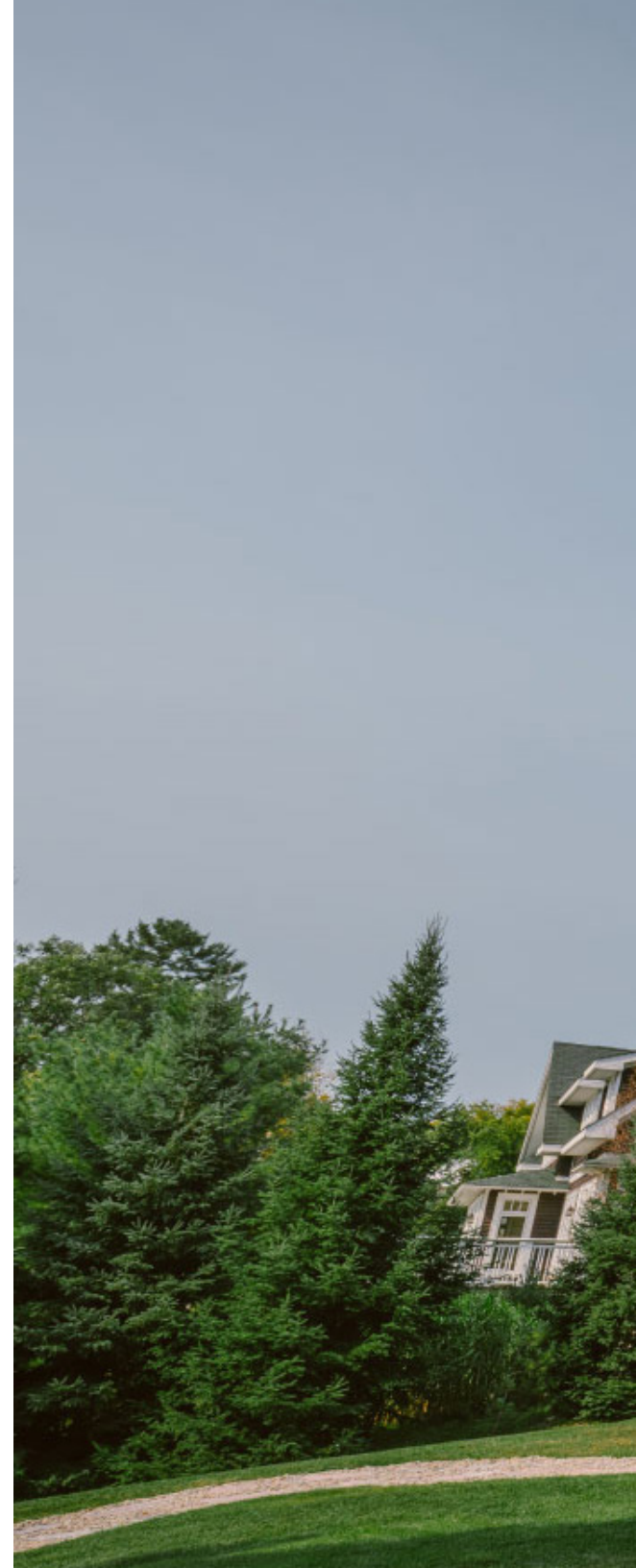
Timberthane is a polyurethane coating used to give wood siding a protective shell and vibrant colouring. Timberthane completely encapsulates each piece of siding making it nearly impossible for water, UV rays, and abrasion to have any effect on the wood or colouring. Timberthane is the most technologically advanced siding on the market and we are proud to be the only manufacturers of this top-quality product.

WHY DO I NEED IT?

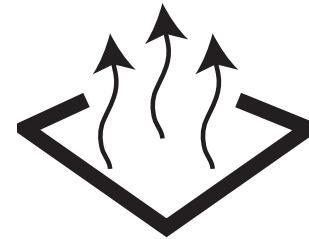
Latex paint siding has a very short lifetime. Due to being water-based, it's very easy for the paint to fade, chip and peel. Over time, your once-vibrant siding will start to look dull. Choosing Timberthane means less work for you later on, and more quality time spent with friends and family. Timberthane contains UV inhibitors that make it less susceptible to fading and discolouration so your house stays bright and fresh looking for years to come without the hassle of yearly maintenance. Timberthane is created when multiple polymer coatings work together to cure and create a durable, resistant shell. This not only protects the colour of your siding, but it also prevents wood decay.

HOW DOES IT BENEFIT ME?

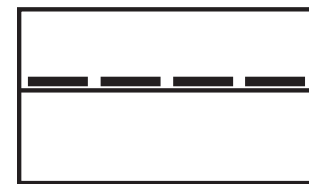
The highest of quality, our siding is backed by a comprehensive lifetime warranty. Timberthane is one of the best investments you can make in your home. It will keep your home looking new while enhancing its overall value. Other lower quality sidings will weather and depreciate costing you more time, money, and hassle in the long run. Do yourself a favour - choose Timberthane the first time.







BREATHABLE
POLYURETHANE
COATING



STAPLE LINE
FOR A CONCEALED &
FASTER INSTALL



CUSTOM COLOURS
FOR ANYONES TASTE



KILN-DRIED
WHITE PINE FOR
DURABLE SUBSTRATE



WATERPROOF

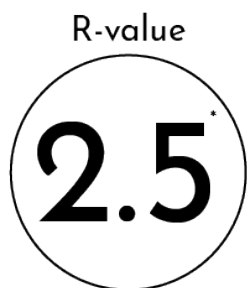
WATERPROOF
DURABLE COATING TO
WITHSTAND THE ELEMENTS



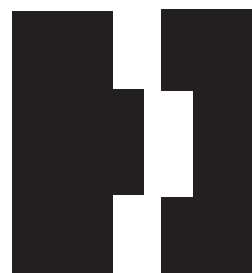
MADE IN CANADA
EVERY STEP OF THE WAY FROM
START TO FINISH



WARRANTY
LIFETIME WARRANTY
AND WE STAND BY IT



R-VALUE
TO HELP PROVIDE
INSULATION AND HEAT IN
YOUR HOME



END-MATCHED
FOR CLEAN AND
SEAMLESS TRANSITIONS
FOR A HIGH-QUALITY LOOK

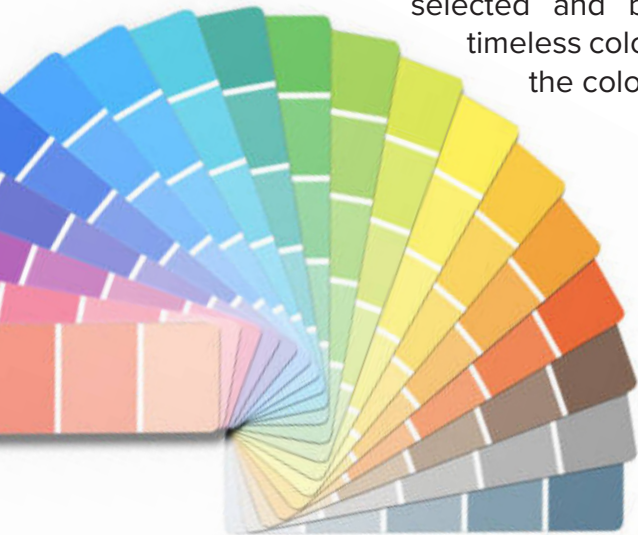
COMPELLINGLY DIFFERENT

PEACE OF MIND

Your home and property should be your refuge, your pride and joy. We are driven by passion to help create your piece of paradise and make it worry-free for many years to come. This passion will be obvious as you read about our state-of-the-art technology, extensive warranties, and reliable customer support team.

A COLOUR PALETTE FOR EVERY TASTE

Come to our brand new, state-of-the-art Colour Consult room and begin your colour selection journey with one of our Colour Specialists. You can make a colour, choose a colour, or bring in a colour swatch – we can match it! Timberthane also offers a 120 Standard Colour Guide that helps make the decision-making process easier. These colours are carefully selected and based off trending and timeless colours. Let's begin selecting the colour of your dreams today!



ONE STOP SHOP

We have all the bases covered. Take trim, for example. Everyone supplies trim but only Timberthane can custom coat any shape and profile of trim that your architect or designer can dream up. We can also coat cedar shake in our special Timberthane coating so you can fully customize the complete exterior of your home.

YOUR PREFERENCE, YOUR WAY

Timberthane Siding is unique to any other siding on the market. The compelling attributes that Timberthane offers allow the end consumer to have complete customization to their particular liking. Full customization from start to finish includes: custom profiles, custom sizes, and custom colours - We can do it all. Picture it now, your own exclusive profile, size, AND colour. Isn't that dreamy? Talk about one of a kind.







THE ADVANTAGES

THE POLYMER ADVANTAGE

At first glance, polymer coatings look much like ordinary paints. But they are totally different in terms of how they perform. Paints simply dry, whereas polymers cure chemically; they form a protective shell that is far tougher than any paint. Look closely and it becomes apparent right from day one that Timberthane Siding is far more robust. Over time, this “polymer advantage” translates into an astonishing performance difference. Our coating uses the same polyurethane mixtures that are contained in marine-grade and industrial finishes – talk about durable for the extreme Canadian summer and winters!

BONUS! Each order comes with a touch-up paint kit. This allows you to touch up your cut end pieces to ensure a full seal around your board for maximum strength.

THE SEAMLESS ADVANTAGE

Timberthane Siding goes the extra mile to provide high-end details that will make your siding journey enjoyable. First, we supply every order with colour-matched coated nails to ensure a seamless look. This provides the high-end finish you are looking for. Second, every board comes end-matched. What this means, is that every board end is finished with a tongue & groove system. This provides a seamless look as well so the boards fit perfectly in place with no large gaps and lessens the possibility of movement in your boards over time. This also saves you time, labour, money, and reduces your total waste during installation.

THE TECHNOLOGY ADVANTAGE

Timberthane siding has a very complex formula that gives us the remarkable results we see today. However, in short, the revolutionary Timberthane coating uses two primary technologies. Firstly, the formula contains ceramic nanospheres, yielding a phenomenal difference in protection against impact, abrasion, and erosion. It's this toughness that can withstand the UV's that cause fading, and the rainfall that causes rot. In addition, Timberthane coating uses an antimicrobial agent, offering protection against bacterial attack – a major cause of siding failure.

THE WORRY FREE ADVANTAGE

Temperature extremes and freeze-thaw cycling play havoc with ordinary pre-finished wood siding because paints and stains are porous; the wood swings from sopping wet to tinder dry with the passing seasons. Timberthane forms a membrane that lets the wood breathe, but controls the moisture content at optimum levels. This “shock absorber” technology is exclusive to Timberthane. So, don’t fret about your siding during these harsh weather swings - Timberthane is solid.

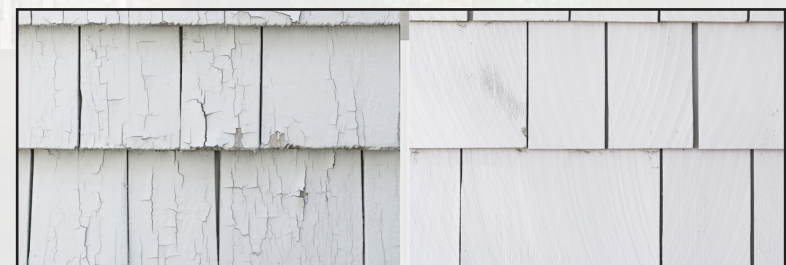
THE SECURITY BLANKET ADVANTAGE

Timberthane Siding offers a lifetime warranty. One of the best in the business, and no, there is no catch. Need we say more?

THE SUBSTRATE ADVANTAGE

Since we are using the most advanced coating on the market, it only makes sense to use the best wood. That’s why we specify furniture-grade Eastern White Pine, often called the “King of Woods,” and gently kiln dry it to 8-12% for optimum stability. Timberthane coating is applied through a highly advanced production machine. This machine uses high-pressure spray guns which achieves an equal and even coating. White Pine is the standard wood used, but if you prefer something else – we can make it! That’s what makes Timberthane so unique.

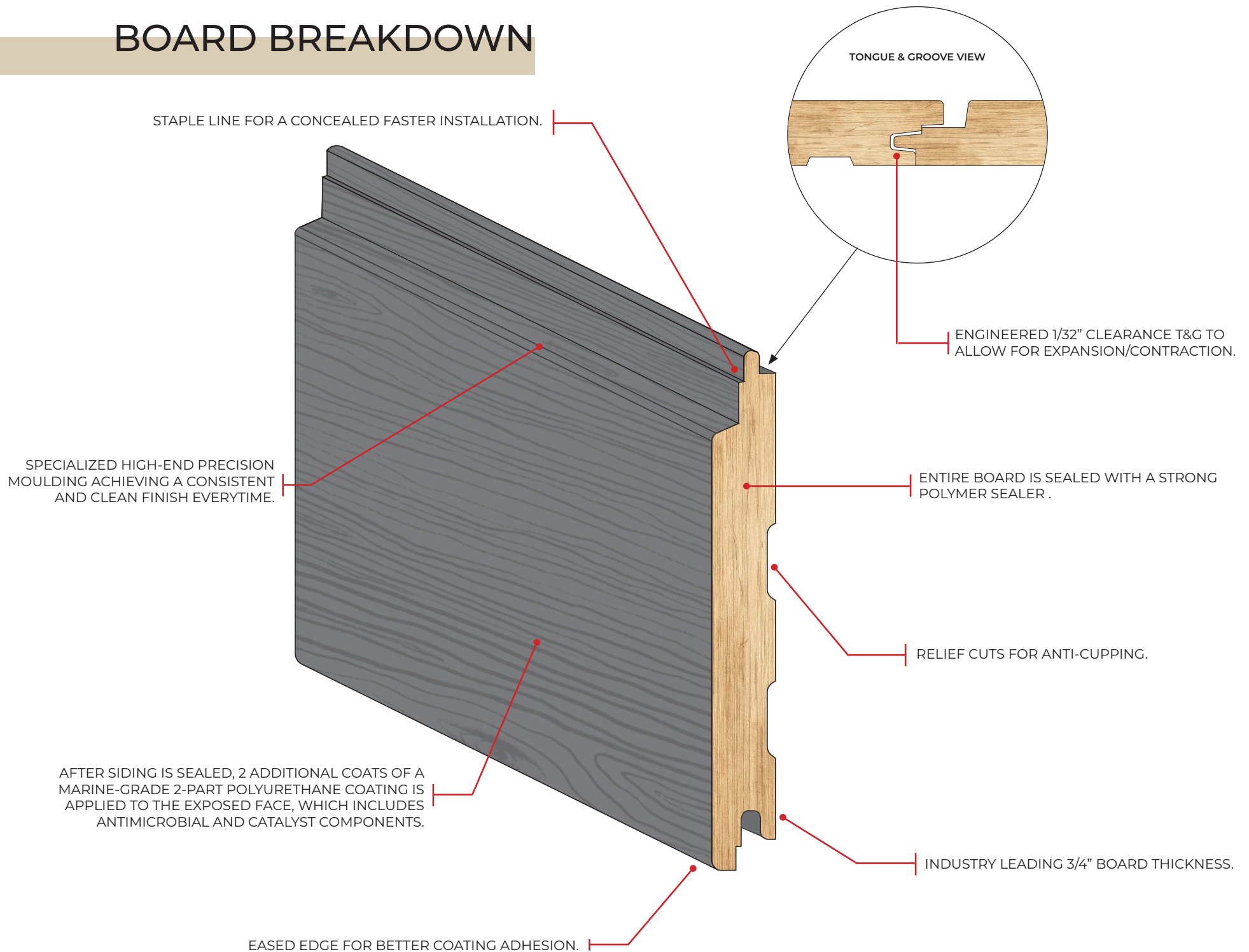
DEFY THE ELEMENTS. DEFY TIME.



COMPETITOR - LATEX PAINT

TIMBERTHANE - POLYURETHANE FORMULA

BOARD BREAKDOWN



COATING SUMMARY:

- MARINE/AUTOMOTIVE GRADE POLYMER
- RESISTS FADING, CHIPPING, AND DECAY
- BREATHABLE COATING
- SLOWER ABSORPTION AND RELEASE OF MOISTURE MAKES FOR A MORE STABLE STRUCTURE
- ANTI-MICROBIAL ADDITIVE REPELS MOLD AND MILDEW
- CONTAINS CERAMIC TO RESIST SCRATCHING AND STAINING
- PACKED WITH UV INHIBITORS, SIDING WON'T FADE LIKE PAINT
- RESISTS WEATHERING AND DESTRUCTIVE ELEMENTS



LET'S GET STARTED

Timberthane Siding is conveniently available in eight standard patterns, consisting of both vertical and horizontal applications. Choosing a pattern for your project is a matter of taste. You can go a step further and design your own profile. With our specialized, high-end precision moulding, we can create any siding look/profile you can dream of. Check out our Profile Dimension Guide at www.timberthane.com if you are interested in learning more about the dimensions and specifications of each profile listed below!

*note: some profiles are considered a custom run



BEVEL



COVE*



CHANNEL*



SHADOWLINE - SQUARE EDGE*



SHADOWLINE - TAPERED



V-JOINT



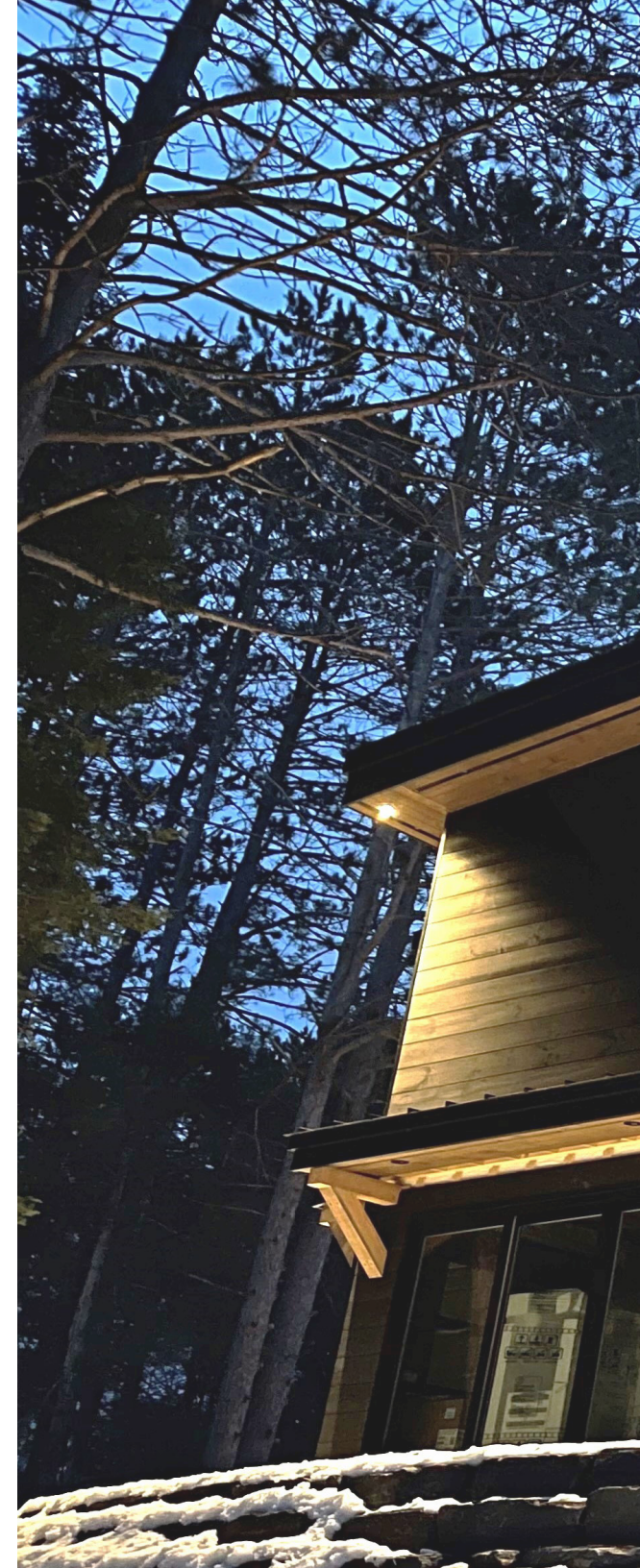
BOARD & BATTEN*



EURO CHANNEL*

WHAT'S NEXT?

You're about to experience our passion first hand. We love learning about our customers' projects, be it an addition or a dream home. We'll swing into action, working closely with your building supply retailer, your architect, and your builder. The way we see it, all of us are partners in a common cause – your cause. To get the ball rolling, give us a call at (705) 645-7757 or shoot us an email at info@muskokatimbermils.com. We'll gather the details, send you samples, and help you with your project from start to finish. What are you waiting for?





(705) 645-7757
www.timberthane.com
info@muskokatimbermills.com
2152 Manitoba St, Bracebridge ON, P1L 1X4

